



DIOCESE of WREXHAM  
ESGOBAETH WRECSAM

**YSGOL GYNRADD Y SANTES FAIR  
ST MARY'S CATHOLIC PRIMARY SCHOOL**



Ebost: [mailbox@stmarys-wxm-pri.wrexham.sch.uk](mailto:mailbox@stmarys-wxm-pri.wrexham.sch.uk)  
Safle: [www.stmarys-wxm-pri.wrexham.sch.uk](http://www.stmarys-wxm-pri.wrexham.sch.uk)

Tel: 01978 352406  
Ffon: 01978 352406

14<sup>th</sup> February 2020

**Pope Francis' Thought for the Day**



The Lord, who is the first to care for us, teaches us to care for our brothers and sisters and the environment which he daily gives us. This is the first ecology that we need.



**Welsh Words/Phrases  
From the  
'Cryw Cymraeg'**

Mae hi'n hanner tymor. Mwynhewch!

It's half term. Enjoy!





**\*\*\*EXCITING NEWS!\*\*\***



As a school community, we have achieved so much together. 'Excellent' and 'Outstanding' inspection reports from Estyn and the Wrexham Diocese, numerous sporting achievements plus national awards are some of the more tangible results of that success. However, we do recognise that the range of experiences and opportunities we need to provide for our children in future years may be limited by our school's present location.

It is with great excitement therefore that we are able to announce, that as part of the 21<sup>st</sup> Century school development programme, St. Mary's has been recognised by the Local Authority as a priority for relocation to a purpose built, state of the art new school. The proposed location is just off Chester Road, close to the town centre and is known locally as 'Nine Acre Field'.

To commence, the Local Authority is shortly to engage in a consultation exercise in relation to the planning application. This exercise will be public and opens on 6<sup>th</sup> March 2020 and closes on 3<sup>rd</sup> April. As part of that consultation, St. Mary's school will be named.

We do recognise that this is the first stage in what will be quite a lengthy process. It is also important to recognise that as a Catholic school, progress will be subject to consultation with Bishop Peter & the Trustees of the Diocese.

Once the consultation exercise commences, further updates will be provided as and when available. You will kept informed, not only with scheme progress, but also how in future years, it is to provide a high quality, enriching education for our children.

The potential relocation of St. Mary's to a new, purpose built school, with excellent facilities represents a huge step forward and one that all staff, children and parents we are sure, will welcome.



Mrs Fatima Nunes left St Mary's today to take up a full-time position in a local day nursery after many years working in our school. She has been a wonderful asset to our team and has always worked hard and put the children's welfare and happiness first. We will all miss her bubbly personality and wish her all the very best.

**Interim Librarians**

The interim librarians will be in the library every day at lunchtime from 12.30pm – 1pm.



Please see below information from a parent

### **Incredible Edible Group**

This Saturday 15<sup>th</sup> February between 2-4pm, the Incredible Edible community garden group will be carrying out a 'digging' session on Mount street (at the back of Matalan). The aim is to create a community garden space for everyone to enjoy and to plant fruit, veg and herbs that anyone and everyone can take for free.

The group currently meet every two weeks on a Saturday between 2-4pm at various sites around Wrexham. At the moment there is the Madeira Hill site, and the Mount Street site will be prepared this Saturday. There will shortly be a future site in Rhosddu too. Anyone is welcome to join in (bring trowel/spade/gardening gloves) and if anyone would like to see a community garden in their local area just get in touch.

The group is on Facebook: @incredibleediblewrecsam.

### **FRIENDS of St Mary's**



We are so grateful to all families who have supported the work of the Friends over the past year. A phenomenal £4,000 has just been donated to the school. This has enabled us to purchase 13 new iPads and much needed new netball posts. With ever decreasing school budgets, we are sadly more and more reliant on the proceeds of fundraising events to enhance the learning resources within the school. We look forward to organising many more events to continue to bring our school community together whilst raising funds for the benefit of all children.

### **Year 4 Fundraising**



As part of the whole school project learning about Money, year 4 decided to hold a special event to raise money and make a profit.

A lot of planning and preparation has gone into this and on Wednesday they held their event for their families. Delicious refreshments made by the children were on offer and we also sold crafts including amazing framed art work. We held a raffle, name the teddy and the event culminated with wonderful entertainment from the talented year 4's. We have made a profit of nearly £200, half will go to Alder Hey Charity to support the Nowak family and half for the year 4 children to decide what they would like to buy to support learning in our future topics. Thank you to all of the families for their support. We really enjoyed it and we hope you did too!

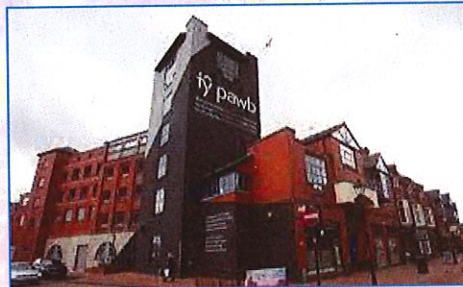




### **Christmas Concert tickets- Belated announcement**



We are delighted to inform you that an amazing £1,600 was raised from the sale of the concert tickets. With this money, we will be purchasing a new projector, speakers and laptop for the infant hall to support the delivery of our new interactive PE scheme. A big thank you for all your support! Diolch o galon



### **Year 3 Ty Pawb**

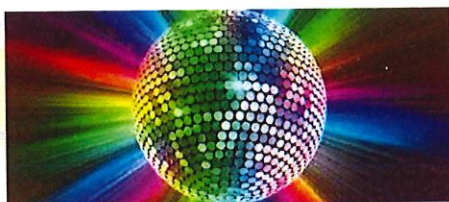
As part of their topic Money Money Money, year 3 have set up their own businesses and have been selling products in school and Ty Pawb for members of the public. A big thank you to all parents, grandparents and friends who came to school and Ty Pawb to support us. Thank you also to the parents and grandparents who came to school beforehand to help the children with the crafts.

### **Year 1 and 2 Chester Zoo Visit**

Yrs1&2 had a wonderful time at the zoo finding out different animals and finding out lots of information for their next 'big question'.

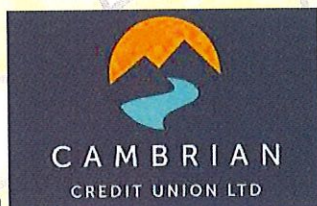






### **Friends' School Disco**

A big thank you to 'DJ Tooley Turntables' for another two fantastic end of term discos! The children had a great time! Huge 'Diolch' to the Friends for organising the refreshments. Diolch to all members of staff for your support as well.

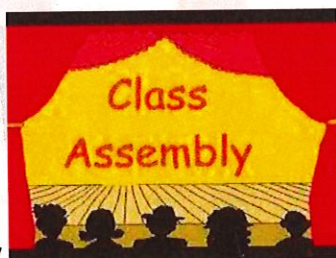


### **Credit Union**

Last night an additional 8 people signed up to the Credit Union. The next paying in date will be Friday 28<sup>th</sup> February (though not for the 8 people who have just signed up as their account will still be in the opening process).

### **Urdd Dance**

After half term Disco and Creative Dances (Monday and Thursdays) will no longer take place after school, they will be practicing at lunch time. Mixed Dance will be taking place on a Tuesday after school until Easter.



### **Y2 Robins' Assembly**

Today, Year 2 Robins delivered a wonderful class assembly in front of the whole school. What confident children. We are so proud of them and are sure that all families will feel the same when they join us at 2:30pm! Da iawn pawb.

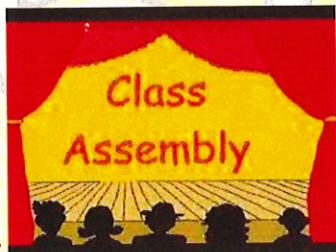
### **Visitors from St Alban's Catholic Primary Cardiff**

It was wonderful to welcome Mrs Rachel Woodward, Headteacher of St Alban's School and one of the Estyn inspectors who was part of our inspection team in July. She brought her two senior teachers to observe our excellent practice with a view to developing their own curriculum in a similar way. It was a pleasure to take the visitors around our wonderful school and once again, our fantastic, polite children and amazing teachers were complimented. Da iawn pawb!



**Ash Wednesday**

We will be having an Ashes service on Wednesday 26<sup>th</sup> February at 10am.



**Taff Assembly**

On Friday 28<sup>th</sup> February, Taff (Mrs Edwards) will be having their assembly and at 2.30pm the parents are invited to the assembly where there will be parking on the playground from 2.15pm.

**Rainbow Slip Draw**

The Rainbow Slip draw will take place on Friday 28<sup>th</sup> February.

**THESE ARE THE CONFIRMED TEACHER TRAINING/ INSET DAYS 2018/2019**  
**(No School for children on these days)**

**INSET DAYS FOR 2019-20**

Monday 20<sup>th</sup> April 2020

**Monday 1<sup>st</sup> June 2020- Additional INSET DAY**

Monday 20<sup>th</sup> July 2020



**Twitter**

We are now on Twitter. Please follow us [@stmaryswxm](https://twitter.com/stmaryswxm) to keep up to date with events, activities and whole school news.



Awesome Attendance!



Week Beginning 3<sup>rd</sup> February 2020

The Foundation Phase Attendance Award this week has been presented to:

Robins Class



99.1%

Llongyfarchiadau – Congratulations!



Week Beginning 3<sup>rd</sup> February 2020

The Key Stage 2 Attendance Award this week has been presented to:

Dovey Class



100 %

Llongyfarchiadau – Congratulations!



Foundation Phase Classes	
Puffins	91.5%
Parrot	88.4%
Penguin	95.4%
Owls	97.9% 😊
Wrens	96% 😊
Sparrows	94.4%
Robins	99.1% 😊
Overall FP Average attendance	<b>94.67%</b>

Key Stage 2 Classes	
Taff	96.7% 😊
Clywedog	98.5% 😊
Alyn	96.7% 😊
Conwy	99.6% 😊
Dovey	100% 🎉
Gwenfro	97.5% 😊
Dyfrdwy	98.8% 😊
Gwaun	95.6%
Overall KS 2 Average attendance	<b>97.93%</b>

Well done to those classes who have achieved or exceeded our school target of 96%! 😊

*R. Jones*